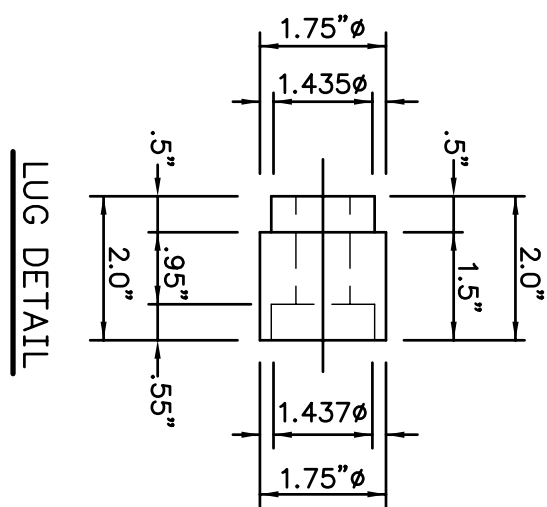
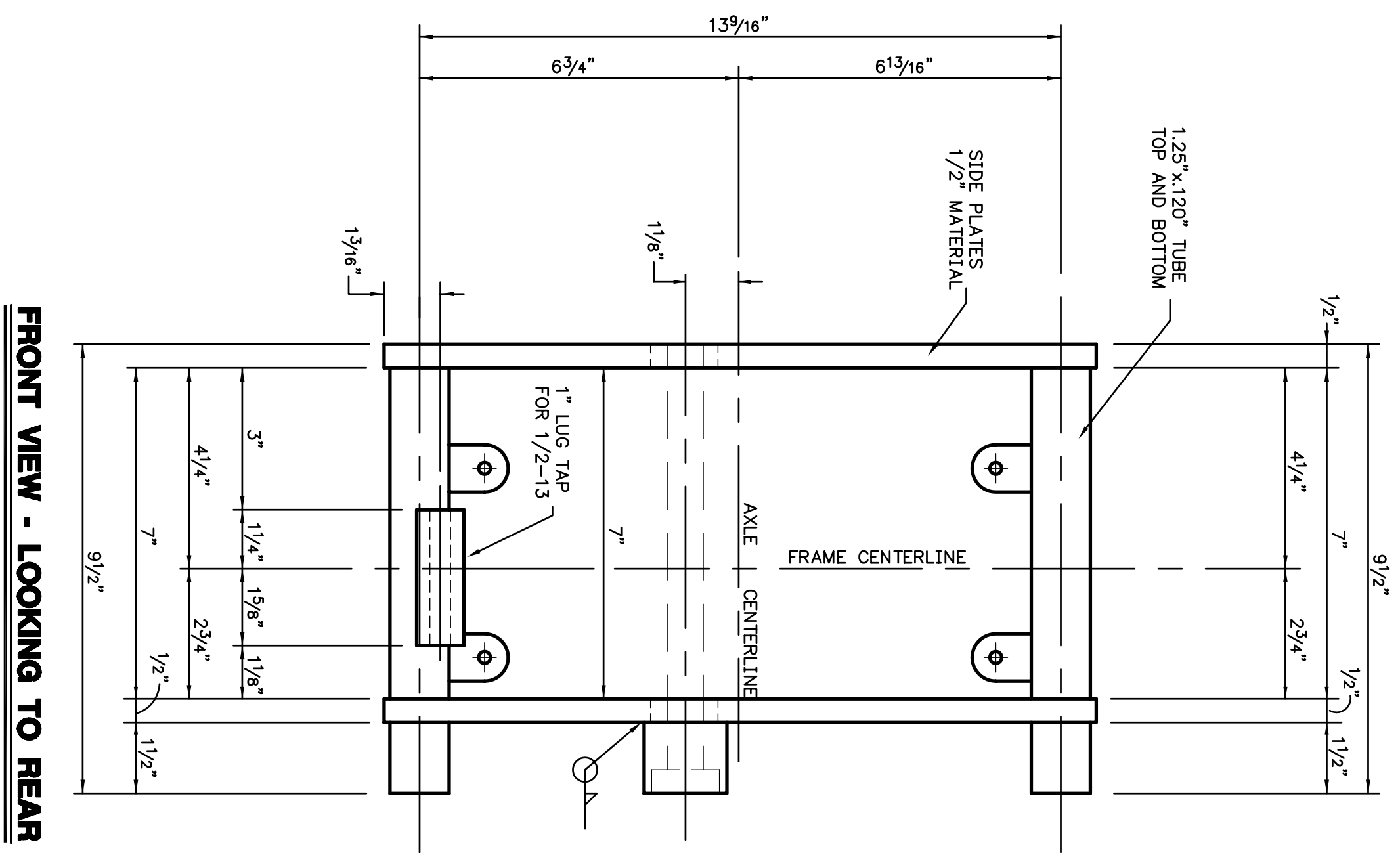
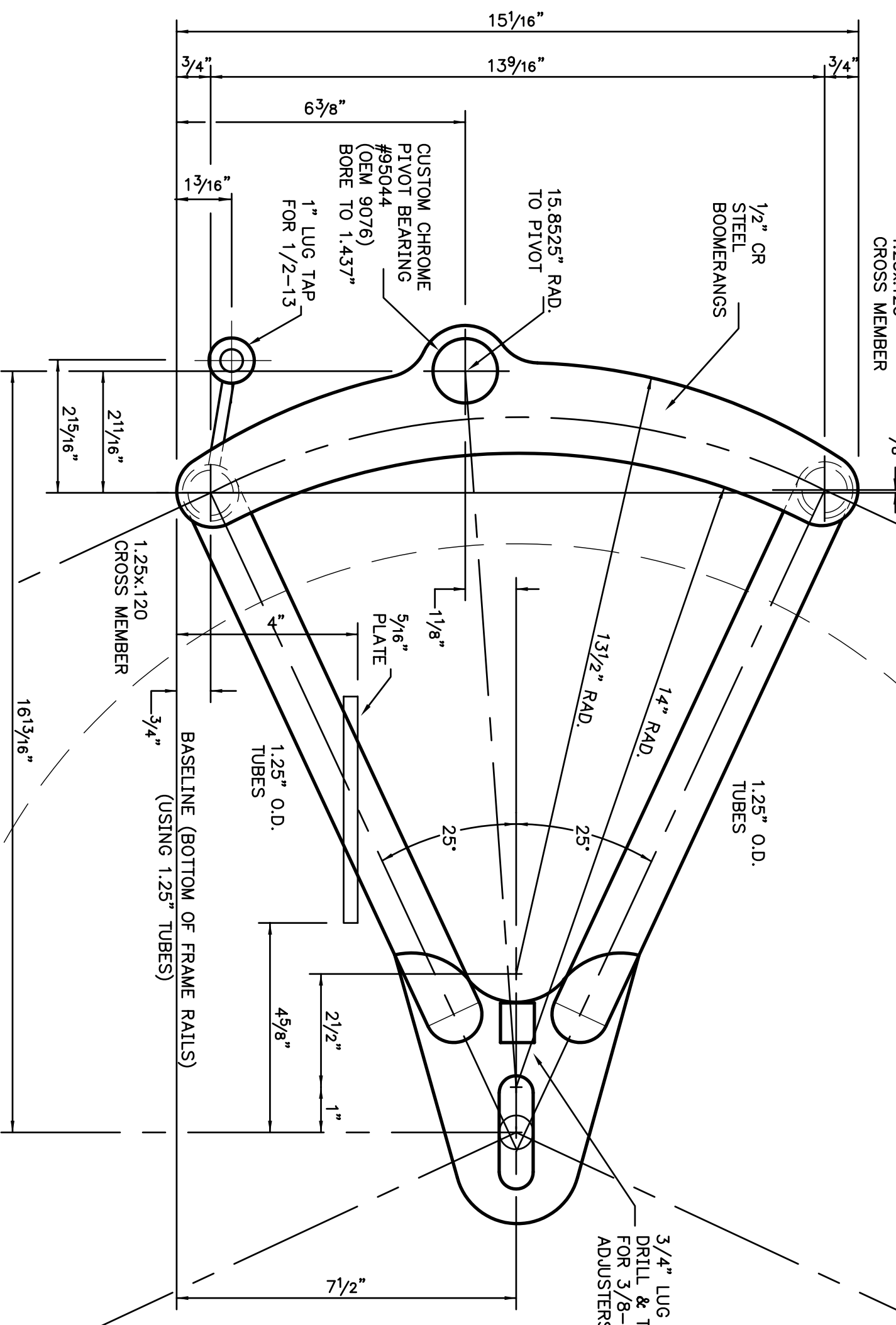


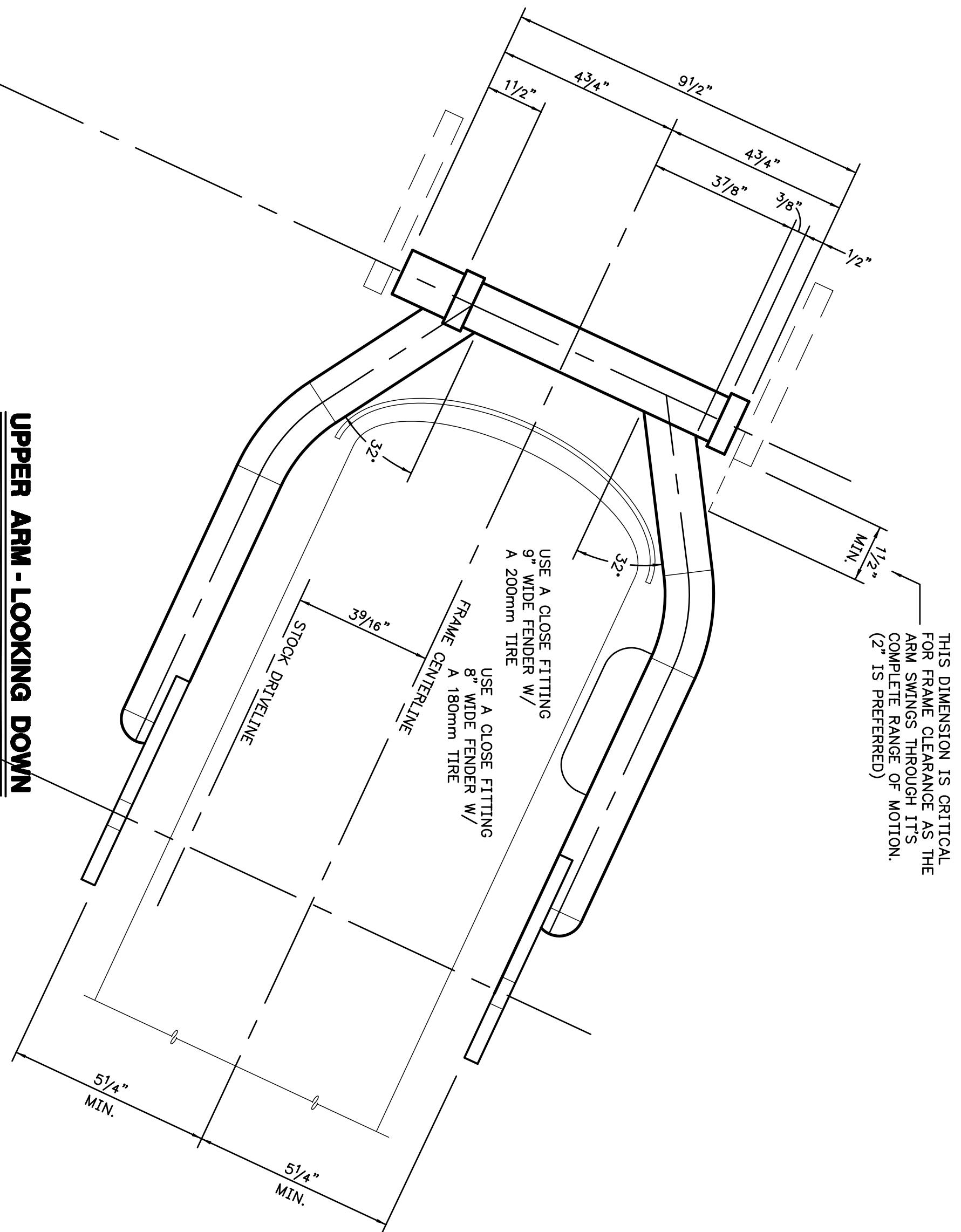
CHOPPER BUILDERS HANDBOOK



FRONT VIEW - LOOKING TO REAR

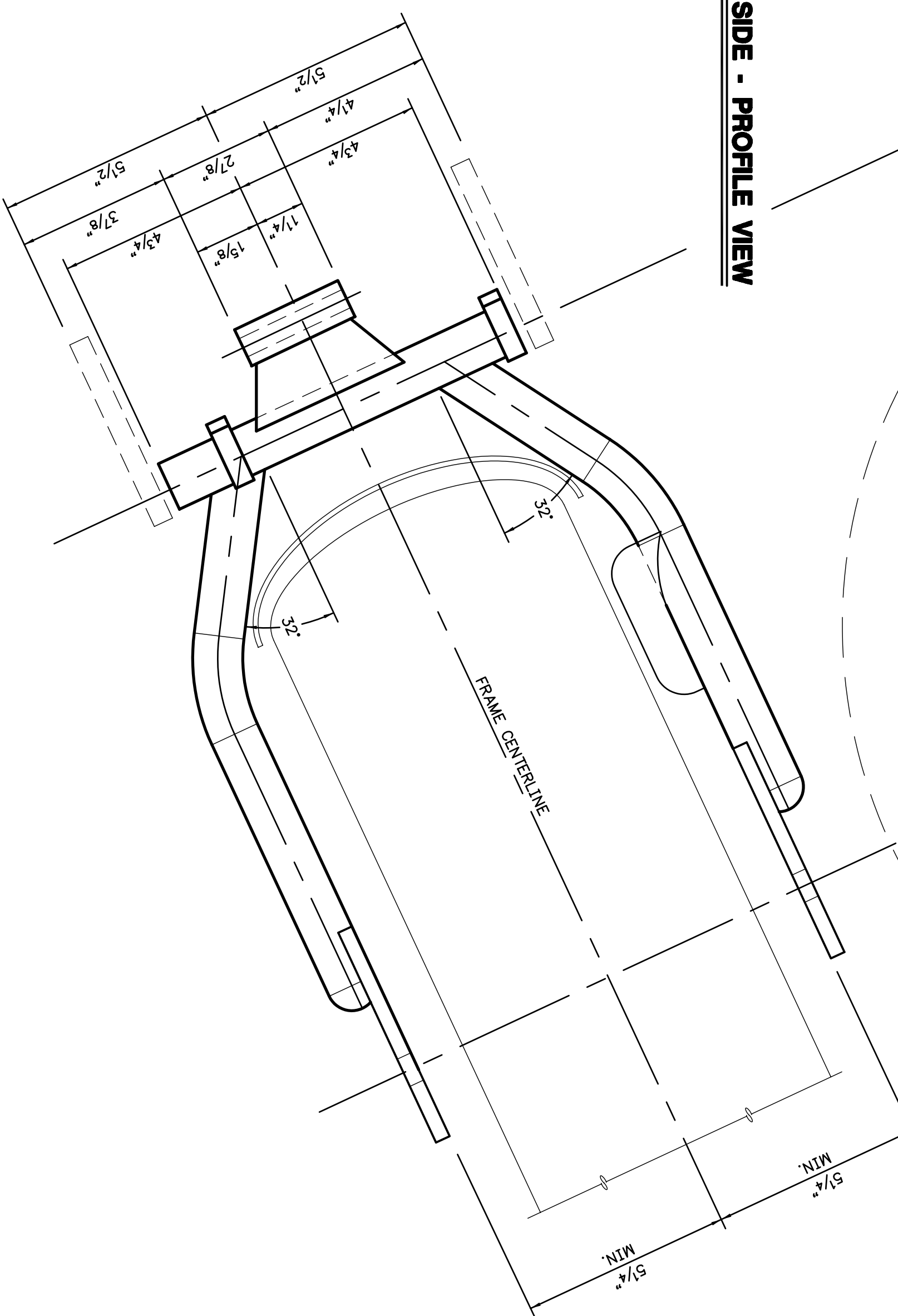


LEFT SIDE - PROFILE VIEW

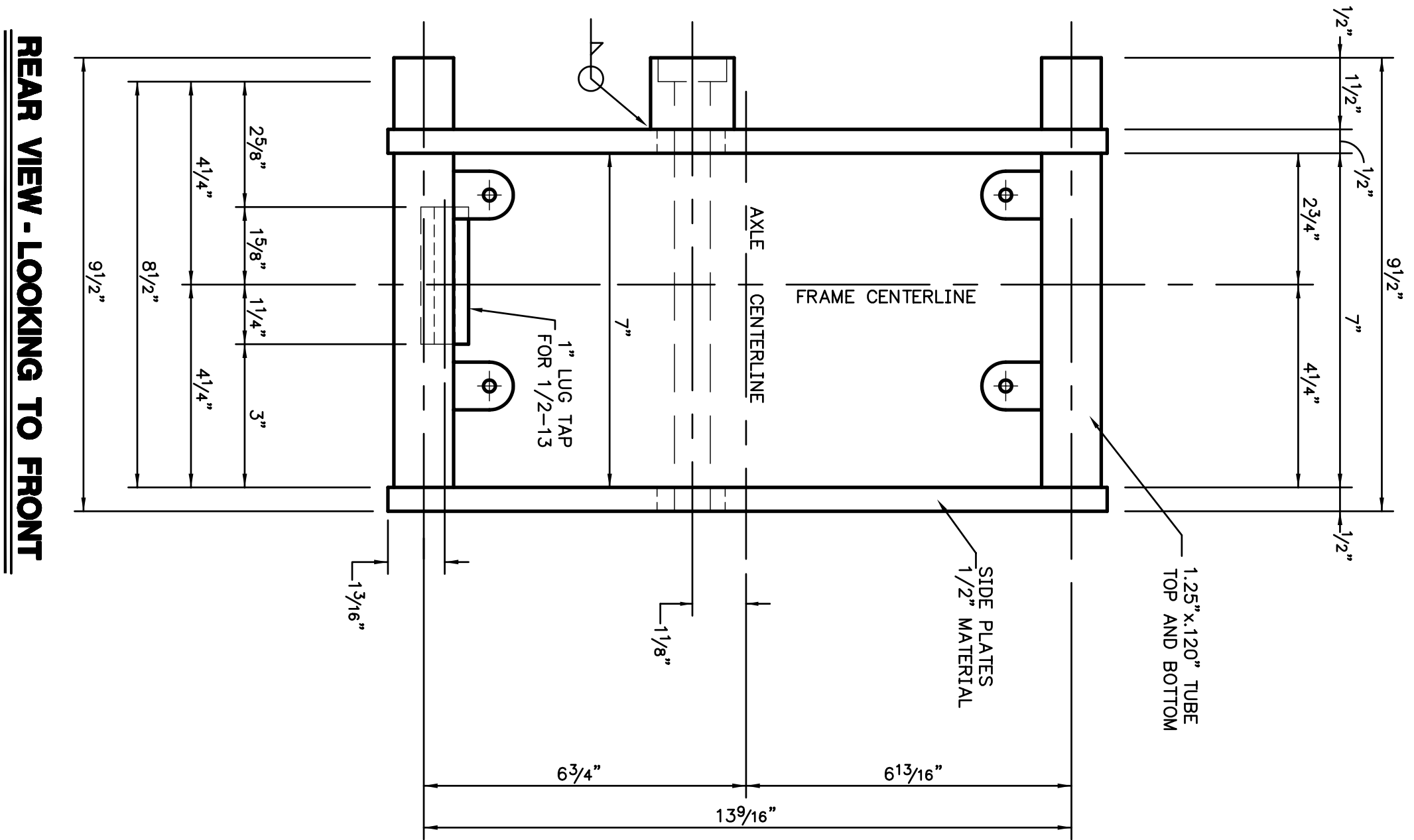


UPPER ARM - LOOKING DOWN

THIS DIMENSION IS CRITICAL FOR FRAME CLEARANCE AS THE COMPLETE SWINGARM OR MOTOR (2\"/>



LOWER ARM - LOOKING DOWN



REAR VIEW - LOOKING TO FRONT

- NOTES:
1. THIS SPOKAL SWINGARM IS NOT FOR USE ON STOK H-D FRAMES OR AFTERMARKET FRAMES. IT IS INTENDED FOR USE ONLY WITH THE SNEAKY-PETE SPOKAL FRAME DESIGN.
 2. TO RUN A 180mm TIRE WITH A 1.125\"/>

1400 RIVER PARK BLVD.
 P.O. BOX 4409
 FAYETTEVILLE, AR 72725-2427
 PH: 479-252-3427
 FAX: 479-252-3427
 WWW.GARYWWEISHAUP.COM

GARY W. WEISHAUP
 PERFORMANCE ENGINEERING
 CHASSIS FABRICATION
 FLOWBENCH TESTING
 MACHINE WORK
 RESTORATIONS

Revision	Date
* INITIAL LAYOUT	12-2-04
* GENERAL REVISION	1-8-05
* GENERAL REVISION	1-19-05

Project Title
SNEAKY-PETE SWINGARM

Drawn By	GMW
Checked By	HC
Date	1-20-05
Scale	3/8" = 1"
Proj. No.	-
Sheet Description	180/200 TIRE SWINGARM CAGE
	SNEAKY-PETE FRAME USE ONLY

Sheet No.
STS-180-2

